

YEAR 2012

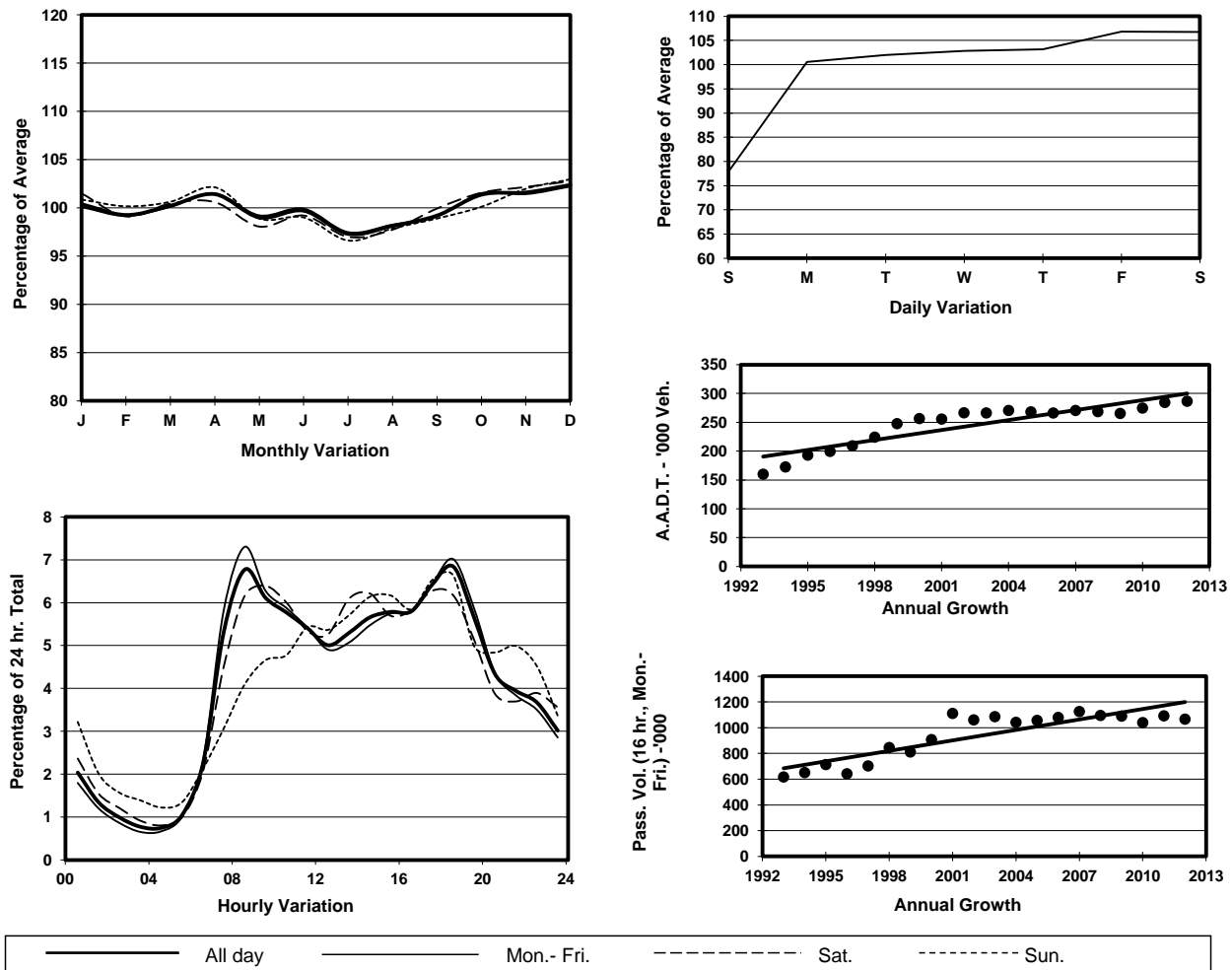
Location

Screenline S-S(East end of Tuen Mun & Yuen Long)

Stations on Cordon/Screenline

5012, 5016, 5029, 6207, 6208 and 6209

1. TRAFFIC FLOW VARIATION AND GROWTH



2. TRAFFIC CHARACTERISTICS (BY DIRECTION)

Parameter	All - Day	Mon. - Fri.	Sat.	Sun.
EAST BOUND				
A.A.D.T.	144410	151260	153420	113080
R 12 / 24 - %	73.4	74.4	72.6	67.3
R 16 / 24 - %	88.5	89.2	87.7	84.7
AM Peak Hour	0800-0900	0800-0900	0800-0900	0900-1000
One-way flow at AM peak hour	11560	13110	10940	5750
T - % (AM)	-	25.6	-	-
PM Peak Hour	1700-1800	1800-1900	1700-1800	1700-1800
One-way flow at PM peak hour	9020	9460	9180	7490
T - % (PM)	-	25.2	-	-
Prop.of commercial vehicles - 16 hr.	-	26.9	-	-
WEST BOUND				
A.A.D.T.	142100	147440	156020	113170
R 12 / 24 - %	67	67.7	67.4	61.5
R 16 / 24 - %	87.1	88.1	85.4	82.8
AM Peak Hour	0800-0900	0800-0900	0900-1000	0900-1000
One-way flow at AM peak hour	7830	8690	9000	4790
T - % (AM)	-	27.1	-	-
PM Peak Hour	1800-1900	1800-1900	1800-1900	1800-1900
One-way flow at PM peak hour	10750	11480	10480	8240
T - % (PM)	-	24.5	-	-
Prop.of commercial vehicles - 16 hr.	-	28.1	-	-

3. OTHER INFORMATION AND COMMENT

4. Vehicle classification and occupancy - Monday to Friday

Time		Class of vehicle									
		Motor Cycle	Private Car	Taxi	Private LB	PLB	Goods veh.		Non Fr. Bus	Fr. Bus	
							Light	M & H		SD	DD
0700-0800	Pro	2.4	40.3	7.6	0.9	4.1	18.3	17.0	5.0	0.2	4.4
	Ocp	1.1	1.5	2.0	8.8	13.3	1.6	1.1	24.8	26.2	66.6
0800-0900 Peak Hour	Pro	1.6	45.8	6.7	0.5	2.2	17.1	18.4	3.5	0.2	4.1
	Ocp	1.0	1.4	2.0	7.6	13.5	1.6	1.2	24.2	26.4	65.7
0900-1000	Pro	1.1	39.1	5.6	0.6	2.2	22.8	21.9	2.5	0.2	4.0
	Ocp	1.0	1.4	1.8	3.4	11.5	1.5	1.2	15.8	22.2	35.4
1000-1100	Pro	0.7	32.5	6.3	0.5	2.4	25.5	25.9	2.4	0.1	3.6
	Ocp	1.0	1.5	2.0	2.7	9.9	1.5	1.2	14.1	13.8	32.4
1100-1200	Pro	0.9	34.8	5.7	0.8	2.9	23.3	25.3	2.4	0.2	3.7
	Ocp	1.1	1.5	2.2	2.9	10.0	1.5	1.2	17.7	17.8	31.0
1200-1300	Pro	0.9	36.3	6.7	0.7	2.5	21.9	24.7	2.6	0.1	3.8
	Ocp	1.0	1.5	2.1	3.9	10.5	1.5	1.2	11.0	12.8	28.9
1300-1400	Pro	0.6	34.4	5.4	0.3	2.9	23.8	26.1	2.3	0.2	4.0
	Ocp	1.0	1.5	2.0	1.9	10.8	1.5	1.2	13.7	13.4	34.0
1400-1500	Pro	0.9	34.0	6.2	0.3	2.2	25.2	25.7	2.1	0.2	3.3
	Ocp	1.1	1.5	2.1	1.6	9.9	1.5	1.2	14.3	12.4	29.7
1500-1600	Pro	0.9	35.9	5.9	0.6	2.3	23.0	25.1	2.7	0.1	3.6
	Ocp	1.0	1.5	2.0	2.7	10.4	1.5	1.2	12.0	13.2	28.1
1600-1700	Pro	1.1	37.0	5.9	0.7	2.5	22.6	23.0	2.8	0.2	4.2
	Ocp	1.0	1.5	2.0	3.6	11.4	1.5	1.2	13.3	13.8	32.4
1700-1800	Pro	1.4	41.9	5.7	0.9	2.2	22.0	18.7	2.6	0.2	4.4
	Ocp	1.1	1.5	2.1	3.4	13.3	1.6	1.2	19.4	22.4	47.5
1800-1900	Pro	2.1	50.0	5.6	0.2	2.6	14.6	16.8	3.9	0.1	4.0
	Ocp	1.1	1.5	2.2	3.8	13.9	1.5	1.1	25.0	24.2	64.7
1900-2000	Pro	1.3	56.3	7.3	0.4	3.3	10.6	12.8	3.9	0.1	4.0
	Ocp	1.1	1.5	2.1	2.6	12.6	1.4	1.1	25.8	24.6	58.2
2000-2100	Pro	1.2	55.5	8.5	0.1	3.6	9.8	13.3	3.6	0.2	4.2
	Ocp	1.0	1.5	1.9	4.1	10.4	1.4	1.1	18.4	18.4	45.3
2100-2200	Pro	1.4	53.3	12.7	0.2	3.7	8.5	11.8	3.0	0.2	5.4
	Ocp	1.2	1.5	2.1	2.8	10.2	1.4	1.1	17.5	16.8	36.7
2200-2300	Pro	1.6	53.2	15.1	0.3	3.5	6.7	10.9	2.8	0.3	5.5
	Ocp	1.2	1.5	2.0	2.1	10.1	1.5	1.1	12.0	13.4	36.9
16 hours	Pro	1.3	42.1	6.9	0.5	2.7	19.0	20.1	3.0	0.2	4.1
	Ocp	1.1	1.5	2.0	4.1	11.5	1.5	1.2	18.9	18.7	43.7

Legend

- Pro.** Proportion of vehicles in % (Sum may not add up to 100% due to figure rounding)
- Ocp.** Average occupancy of vehicles
- M & H** Medium and Heavy